

Polly Yarnell McClain

[Memorial](#)[Photos](#)[Flowers](#)[Share](#)[Edit](#)

[Learn about upgrading this memorial...](#)

Birth: Sep. 25, 1793
Knox County
Tennessee, USA

Death: Jan. 15, 1874
Knox County
Tennessee, USA

Polly Yarnell was the daughter of Mordecai Yarnell b. 17 Apr 1767 in PA d. 30 Jul 1846 in Moniteau Co., MO, son of Daniel Yarnell, and Jane Duncan b. 1772; she had the following known siblings: Malinda Ann (her twin) who married Daniel Charles McLain; Isbella, Rachael, Frances, Minerva, Isaac, Martha, Henry John who married Ellen Murray, Rebecca who married John Tillery Jr., and Jane who married Alfred Standifer.

Polly married on 3 Feb 1818 in Knox Co. TN, James David McClain (buried at this cem.).

Family links:

Spouse:
James David McClain (1789 - 1867)*

*[Calculated relationship](#)

Burial:
[Glenwood Cemetery](#)
Powell
Knox County
Tennessee, USA

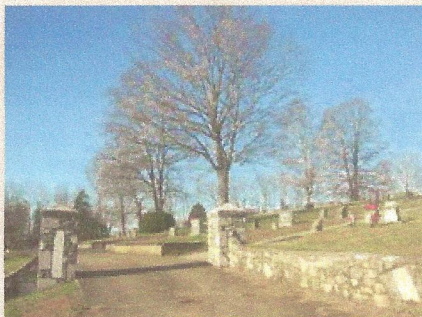
Created by: [Alice Huitt Preston](#)
Record added: Aug 09, 2005
Find A Grave Memorial# 11503165



Added by: [Tommie Moser Nichols](#)



Added by: [Tommie Moser Nichols](#)



Cemetery Photo

Added by: [Shelli Steedman](#)